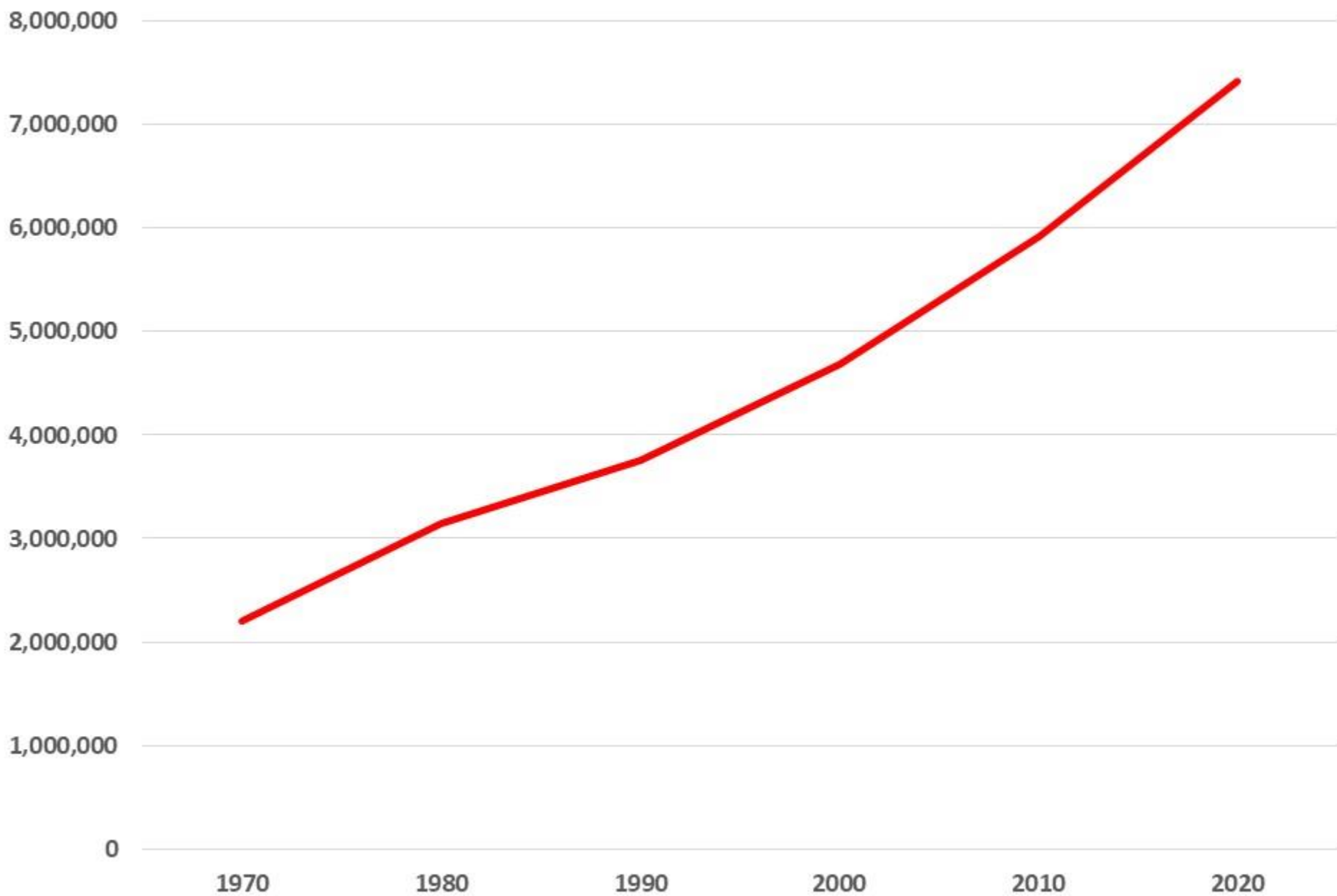


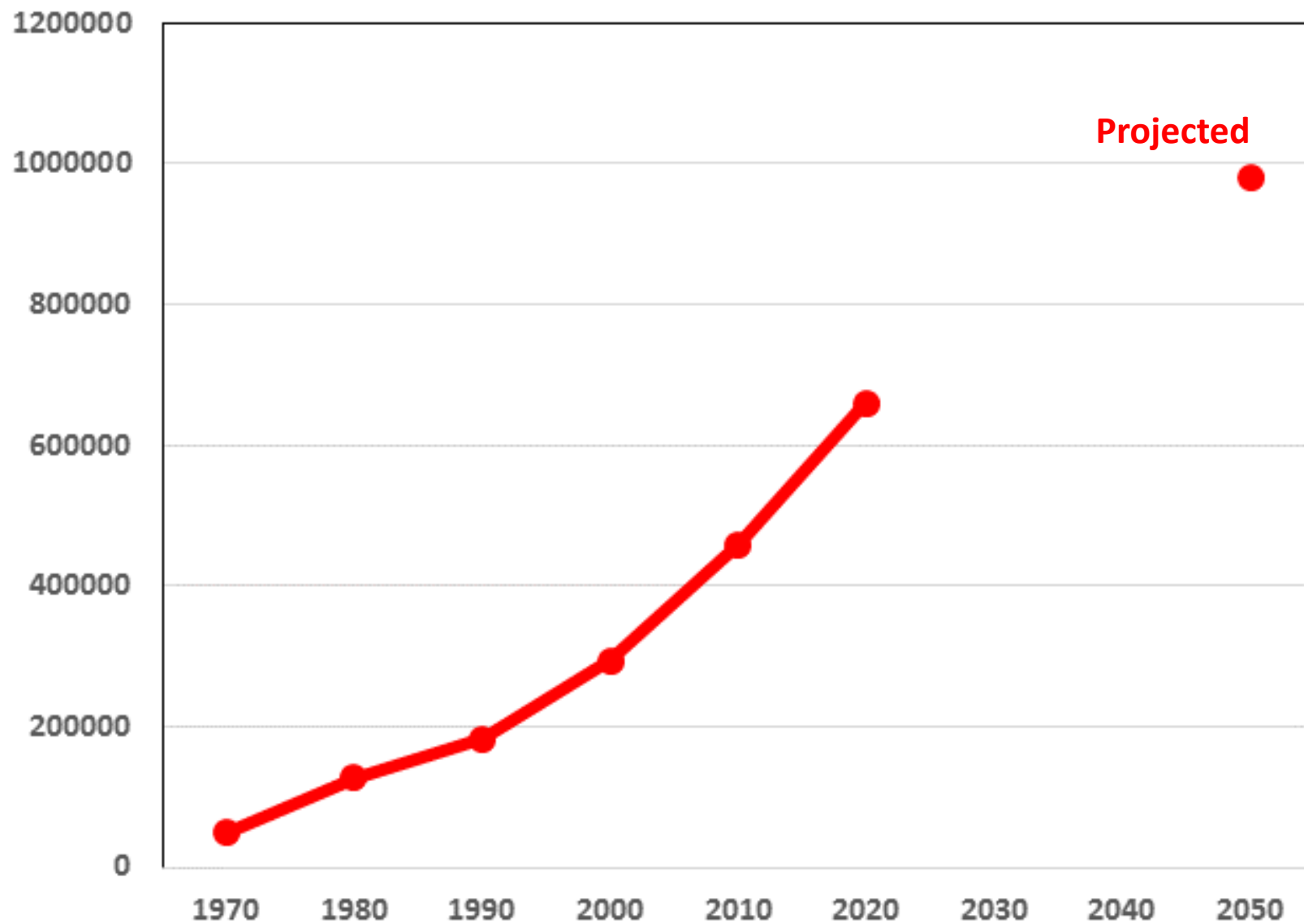
LAKE CREEK GREENWAY



GREATER HOUSTON POPULATION (9 COUNTIES)



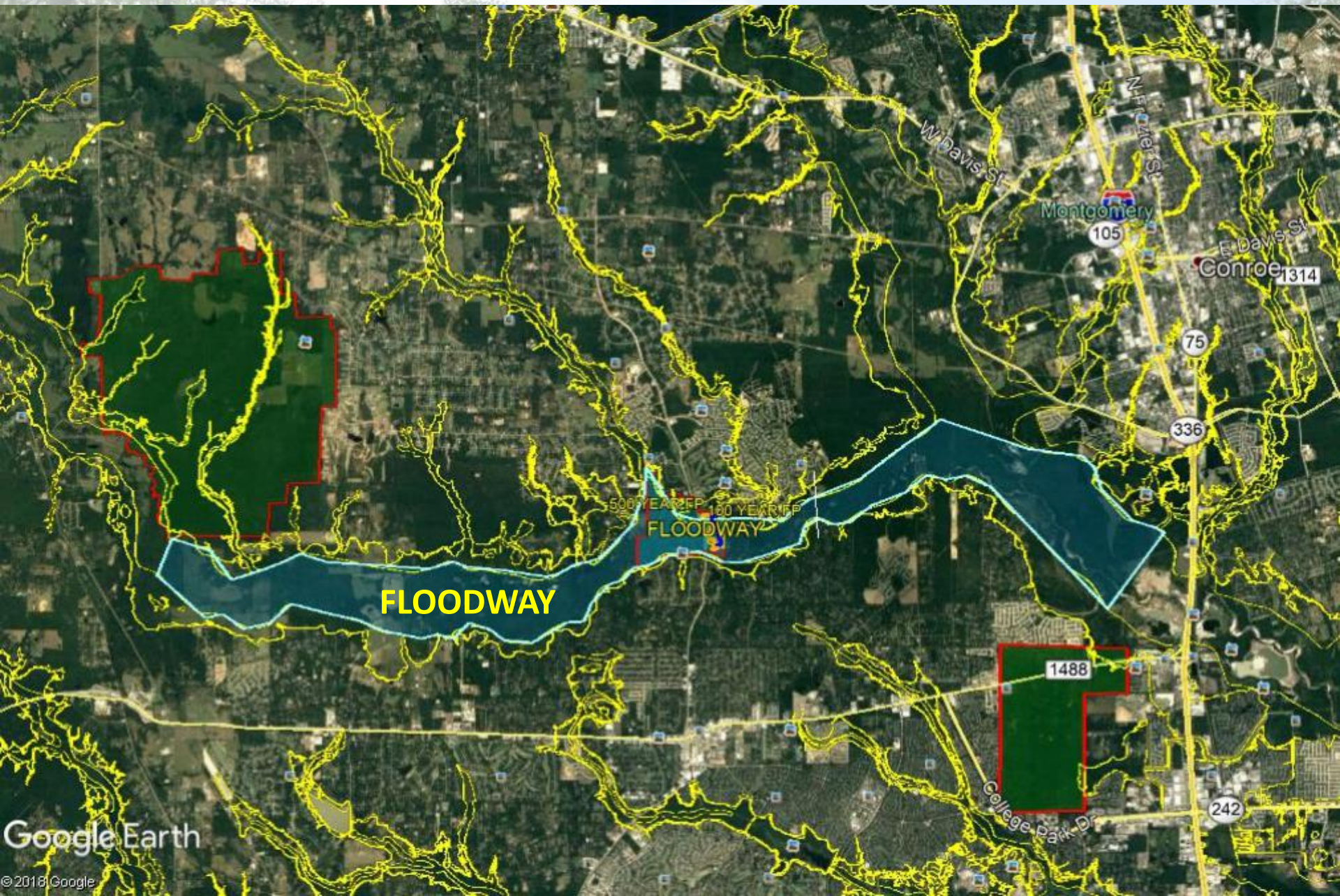
MONTGOMERY COUNTY POPULATION



WHY A GREENWAY

- **Mitigate Effects of Development**
 - **Mitigate loss of green space**
 - **Reduce local and downstream flooding**
 - **Decrease pollution of waterways**
 - **Mitigate effects on air quality**
- **Access to Recreation and Nature**
 - **Improves mental & physical health**
 - **Offers special educational opportunities**
 - **Improves business opportunities**
 - **Reduces driving distances to outdoor recreation**

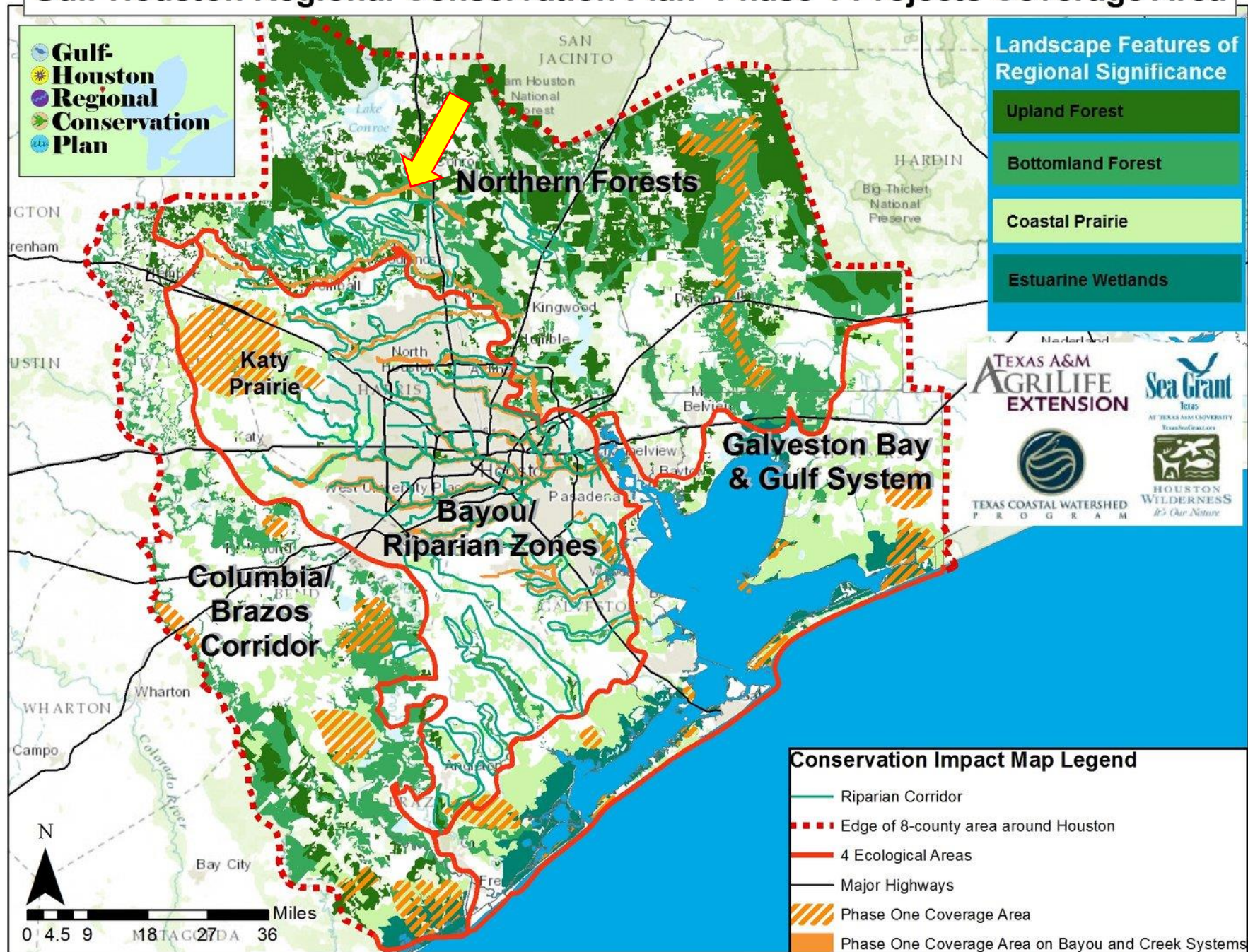
GREENWAY AREA OF INTEREST



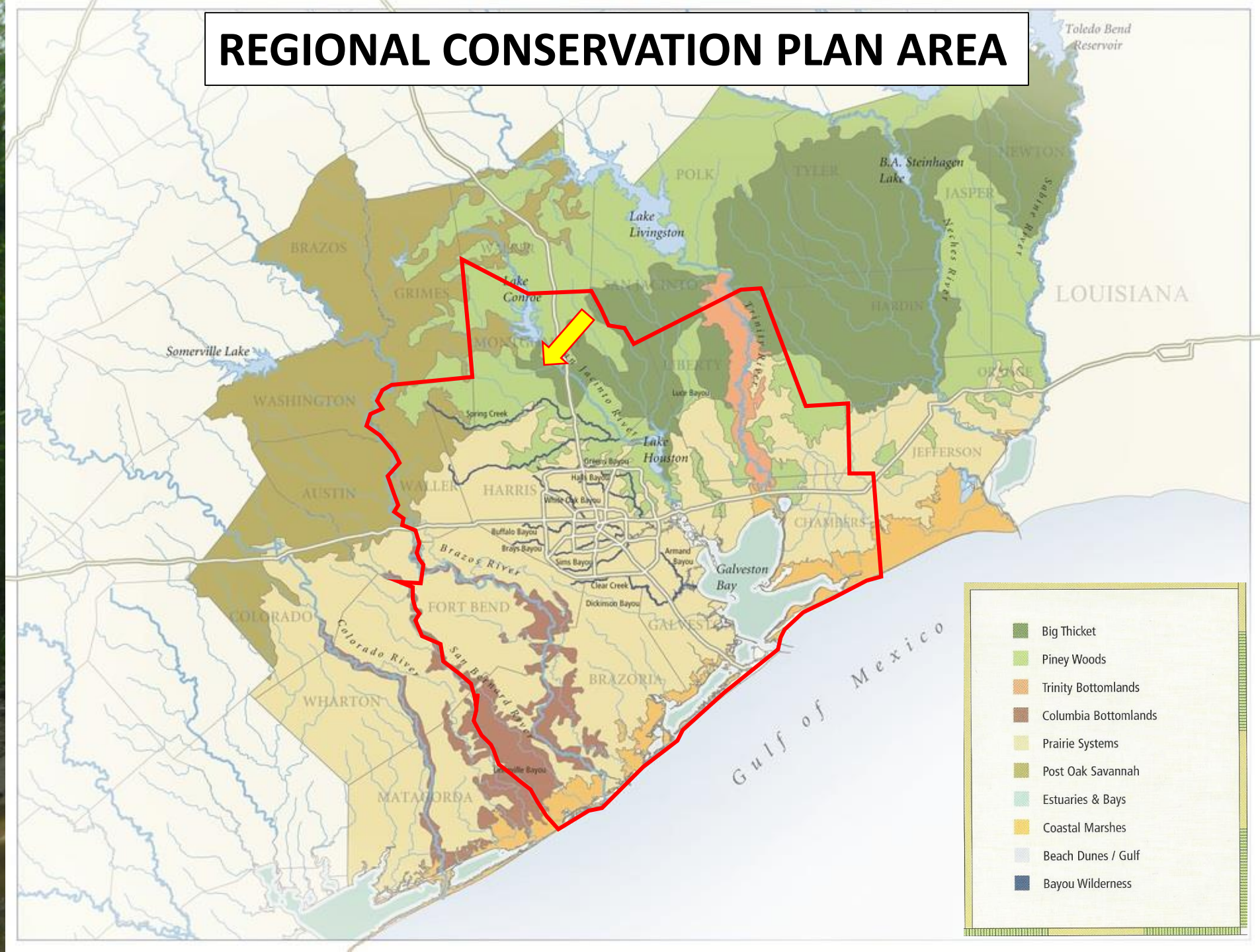
PART OF REGIONAL CONSERVATION PLAN

- **Increase Greenspace from 9 to 24% by 2040**
 - **Riparian buffers**
 - **Floodplain Preserves**
 - **Multi-use Detention Areas**
 - **Wetlands Mitigation**
 - **Parks & Other Greenspace**
- **8 Counties**
- **4 Major Focus Areas**
 - **Bayou Riparian Zones'**
 - **Columbia/Brazoria Corridor**
 - **Galveston Bay and Gulf System**
 - **Northern Forests**
- **Lake Creek Riparian Area is within Phase 1**

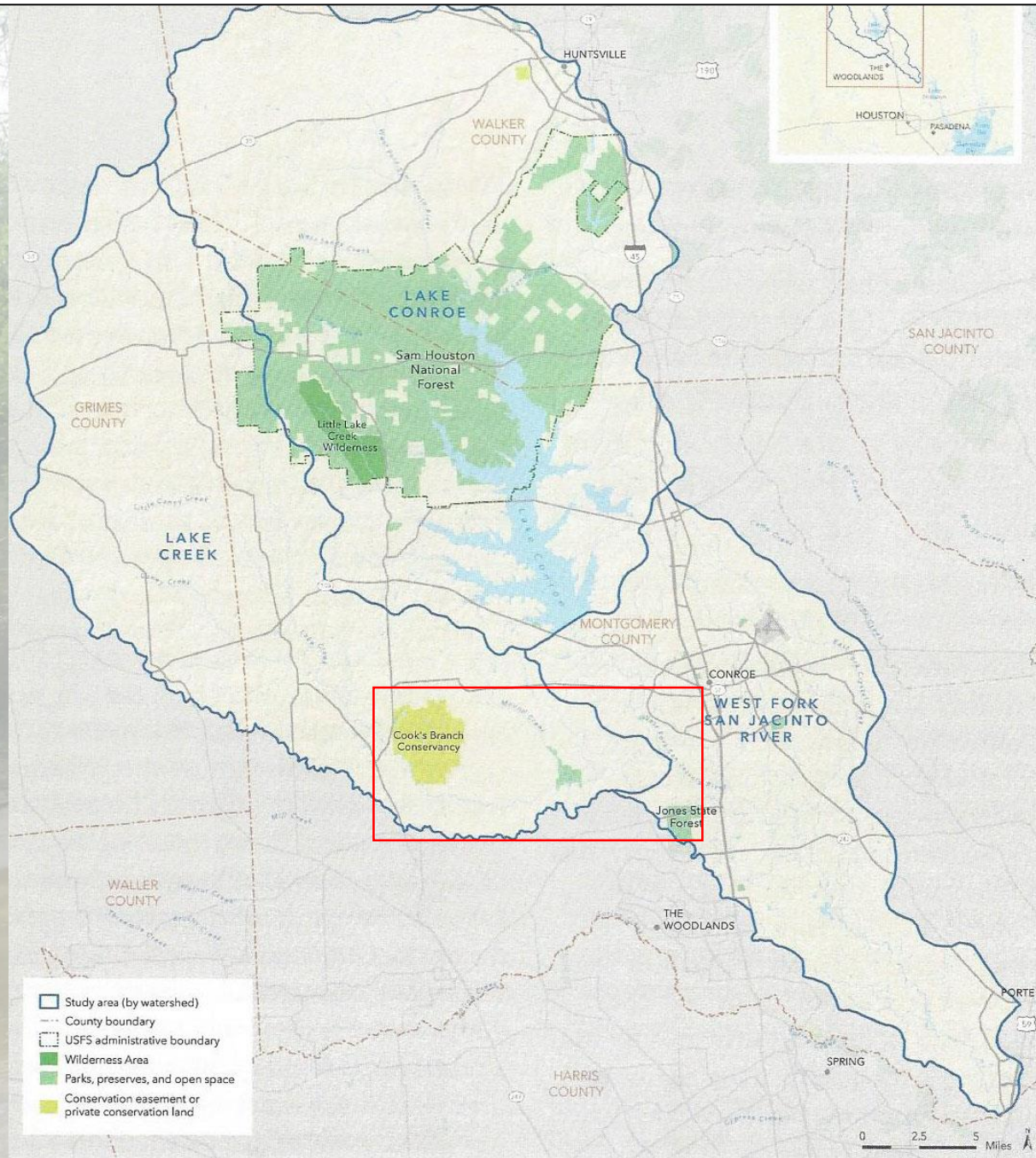
Gulf-Houston Regional Conservation Plan- Phase 1 Projects Coverage Area



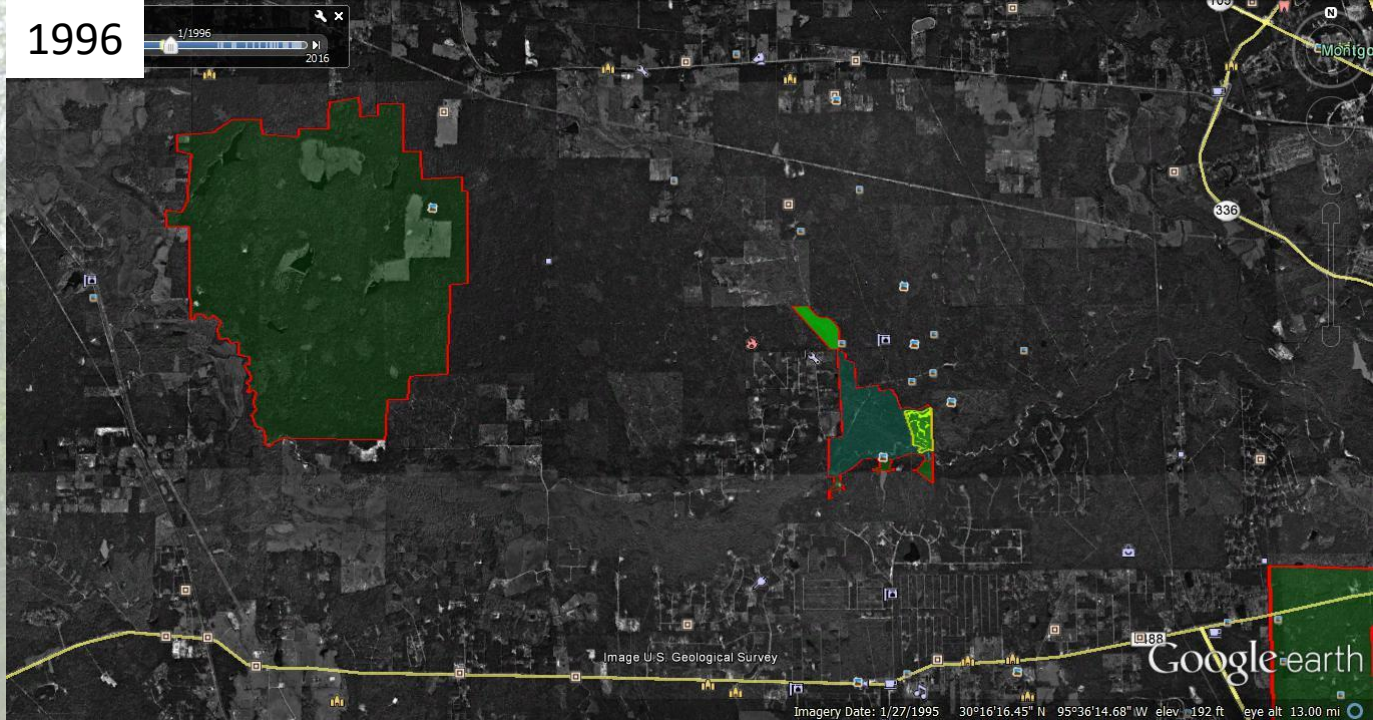
REGIONAL CONSERVATION PLAN AREA



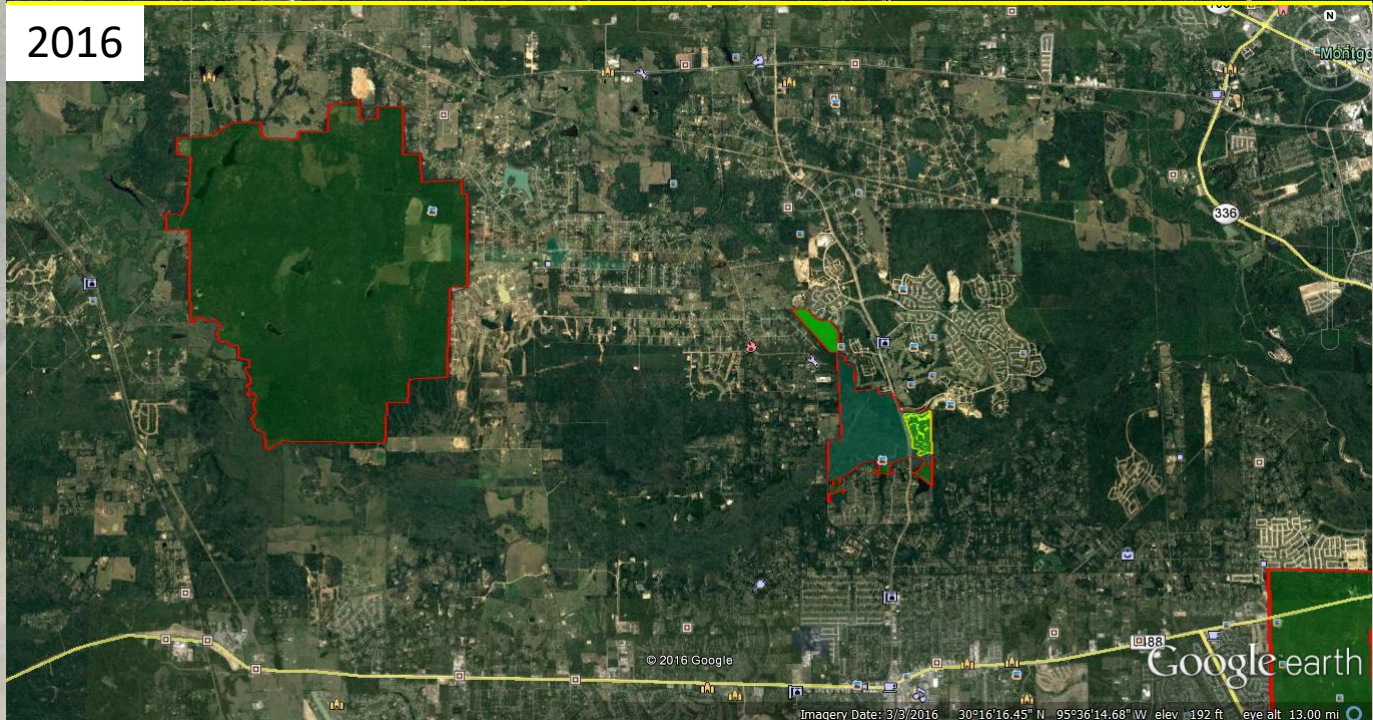
LOCAL LOWER LAKE CREEK/PART WEST FORK SAN JACINTO INITIAL FOCUS



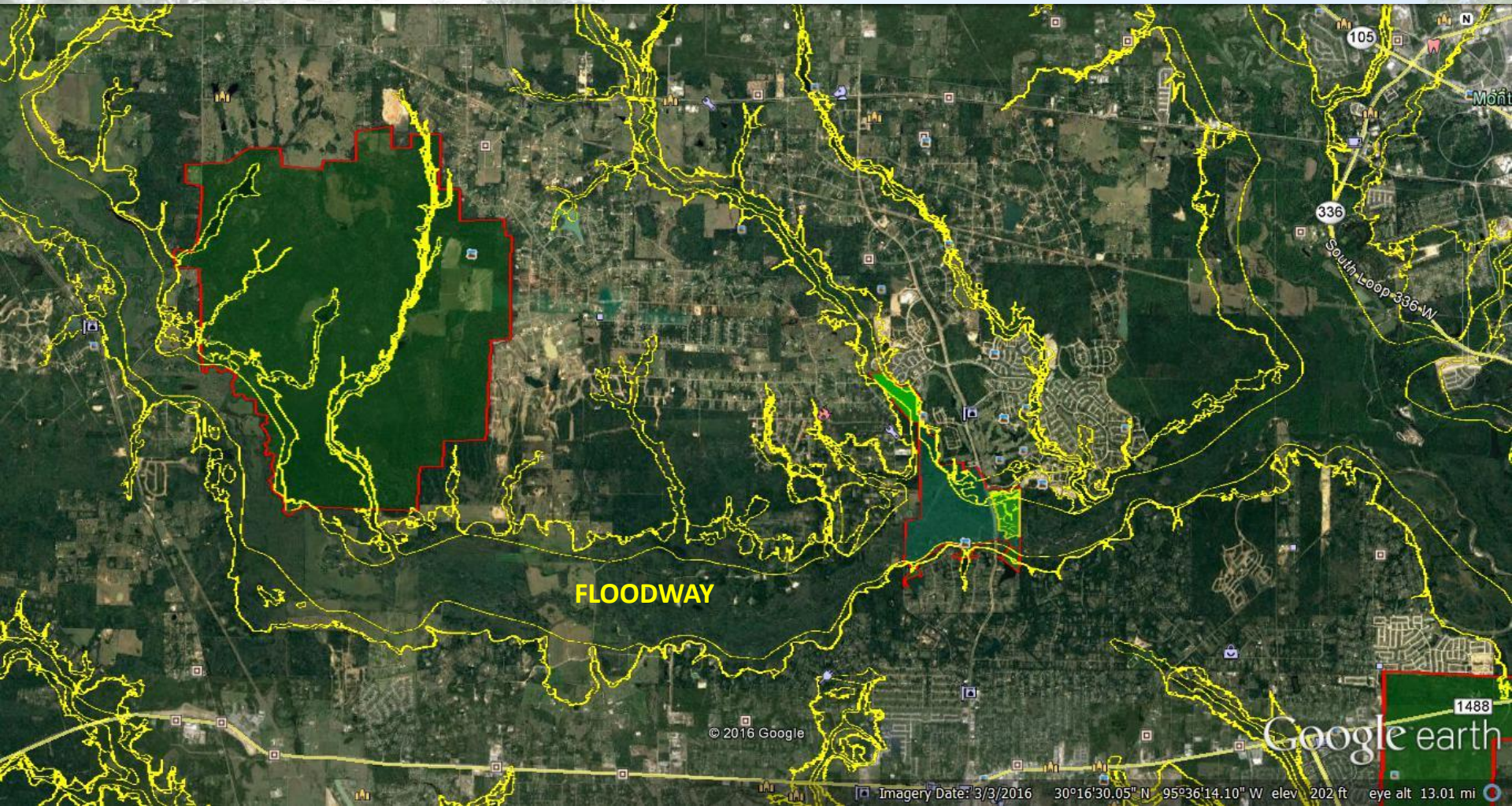
1996



2016



LOWER LAKE CREEK FLOOD PLAINS



Partnership Activities

- **Near/Mid Term**

- Formed Lake Creek Greenway Partnership
 - Recruit Volunteers/Members
 - Form Partnerships with Business/Non Profits
- Community Education Programs
- Develop Outdoor Program Opportunities
 - Lake Creek Preserve
 - Paddle Trail
 - Activities for Youth/Programs for residents
- Identify Landowner/Business Partners

- **Long Term**

- Nature/Conference Center
- Add preserves/conservation easements along creek (with area Land Trusts/ property owners)



Woodforest by Johnson Development

Lake Creek Preserve

Jones State
Forest

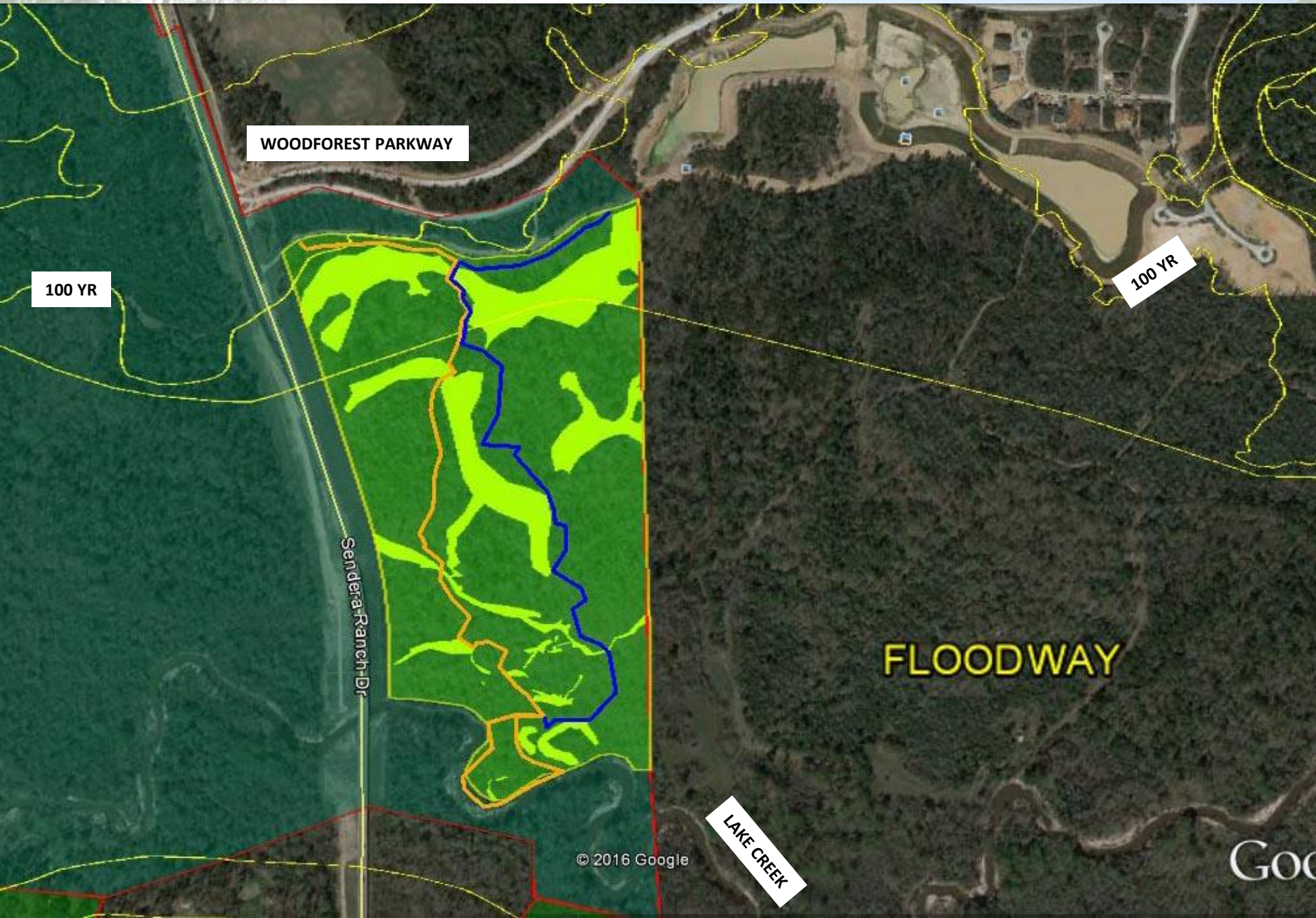
Woodlands

© 2016 Google

Google earth

Imagery Date: 3/3/2016 30°15'16.62" N 95°31'34.19" W elev 202 ft eye alt 11.61 mi

MONTGOMERY COUNTY LAKE CREEK PRESERVE



500+ FEET OF BOARDWALKS



POND NATURE PROGRAM AREA



EPHEMERAL POND ALONG TRAIL



EDUCATIONAL SIGNAGE AND TRAIL GUIDE



EPHEMERAL PONDS

Wetland ponds are distributed throughout the wetland. They are small, shallow, and often dry out during the summer months. They are important for providing a habitat for many species of plants and animals. They also play a role in the water cycle by storing water during heavy rains and releasing it slowly over time. They also help to filter out pollutants and sediments from the water.

Wetland ponds are a vital part of a diverse ecosystem, but are becoming scarce due to the clearing of wetland areas and draining of the wetland ponds.

Sign Approved by Montgomery County Soil & Water Conservation District

36

VARIED HABITATS



CREEK LOOP



OPEN HARDWOOD FOREST



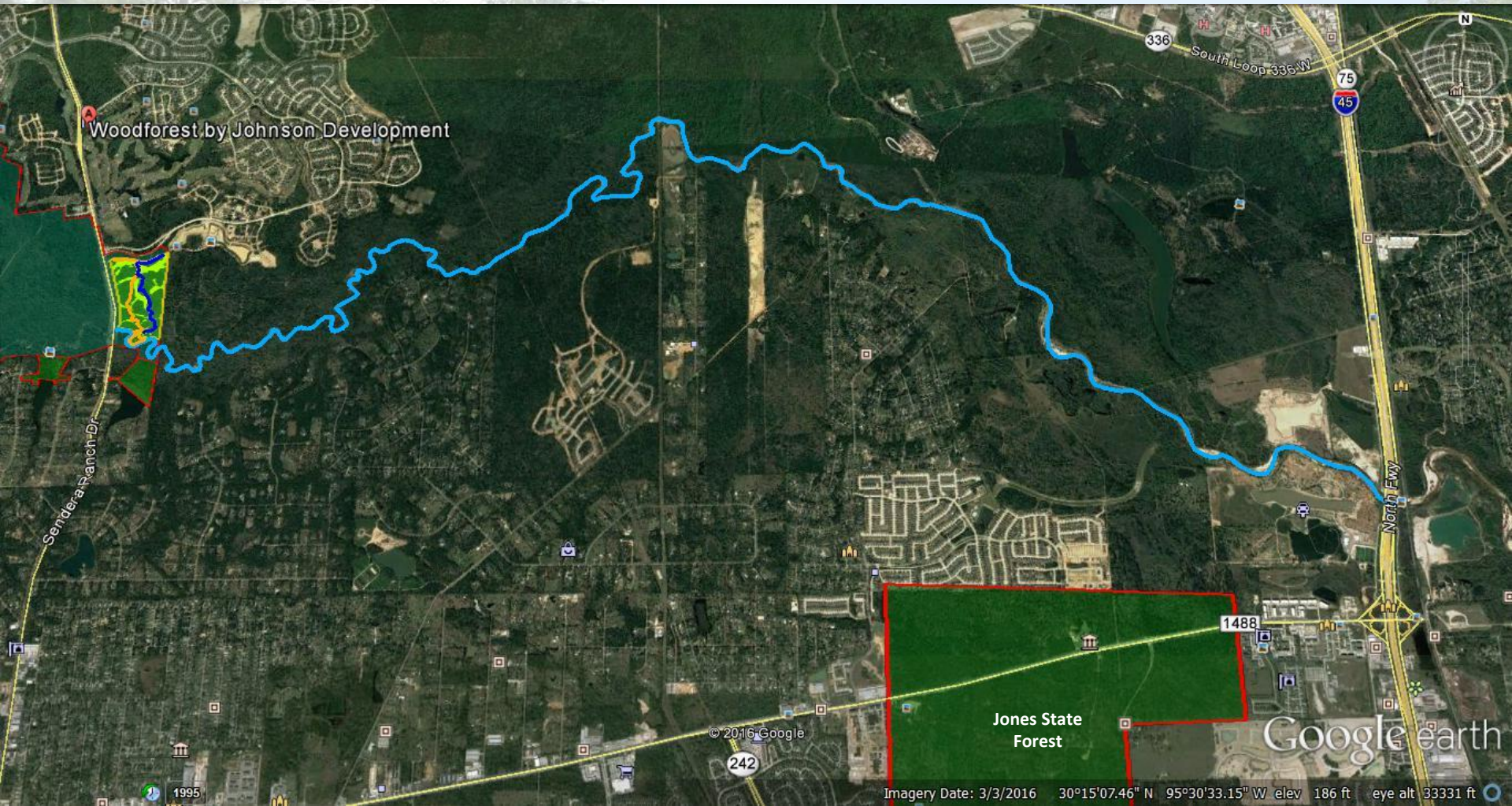
PALMETTO GROVES



DISPLAYS OF SPANISH MOSS

LAKE CREEK PADDLETRAIL

Fish Creek Thoroughfare to I45









LOCAL NATURE/CONFERENCE CENTER

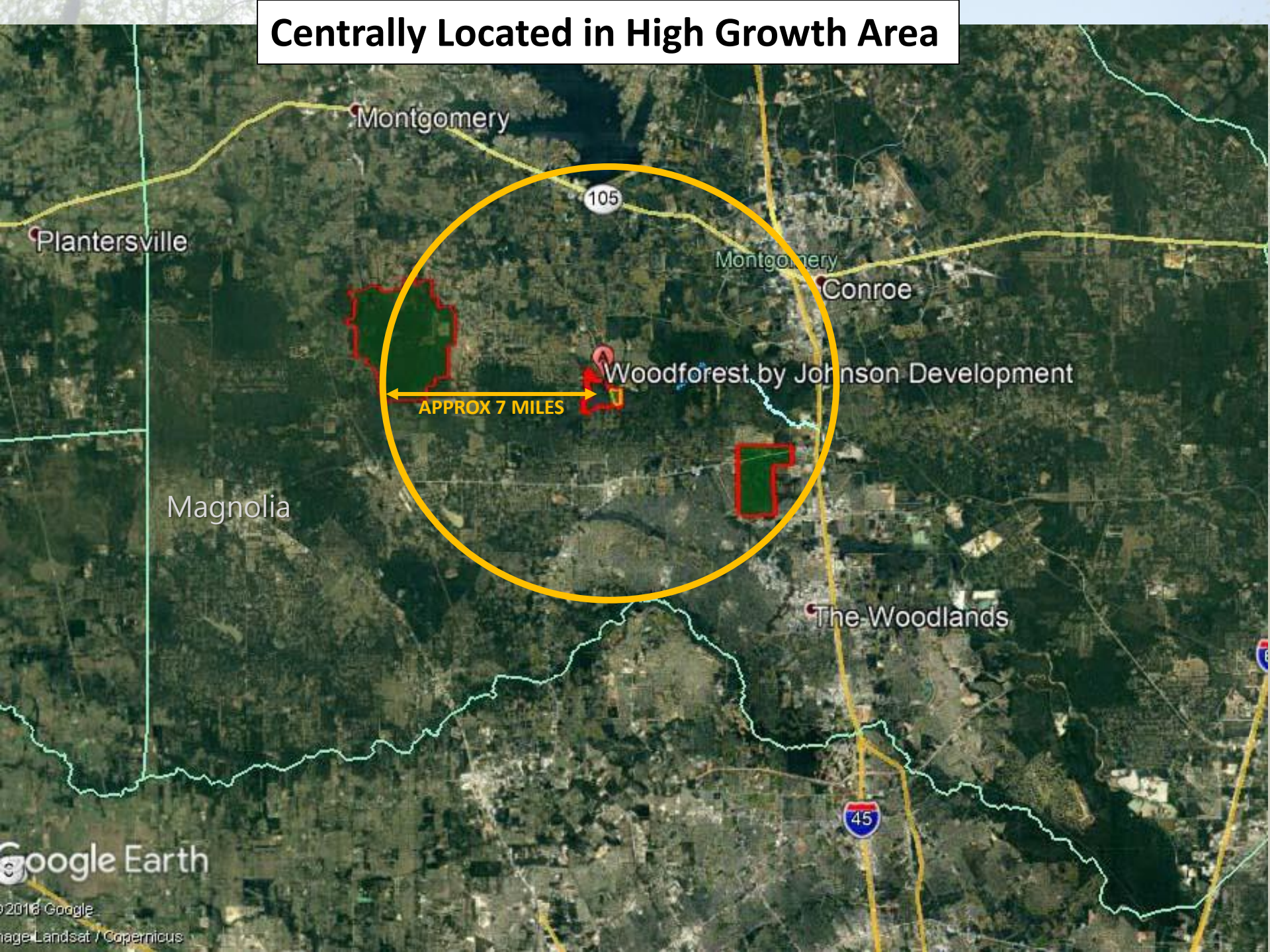
WHY A NATURE/CONFERENCE CENTER

- **Outdoor/hands on learning often more effective than classroom.**
- **Improve resident understanding of local resource issues.**
- **Magnet to encourage outdoor activities.**
- **Expose conference attendees to value of bottomlands**
- **Increase access to outdoor activities for health benefits.**
- **Attract business to area**

WHY IN THIS AREA THIS LOCATION

- **Centrally located to Magnolia, Montgomery, Conroe**
- **Over 150,000 residents within 15 minute drive (and increasing)**
- **Proximity to 13+ schools in three school districts within 20 min.**
- **Within/adjacent to approximately 600 acres of preserves**
- **Complements habitats in Jones State Forest**
- **Enhances area as tourist destination**
- **Minimal flood risk if located and designed properly**

Centrally Located in High Growth Area



Montgomery

105

Plantersville

Montgomery

Conroe

Woodforest by Johnson Development

APPROX 7 MILES

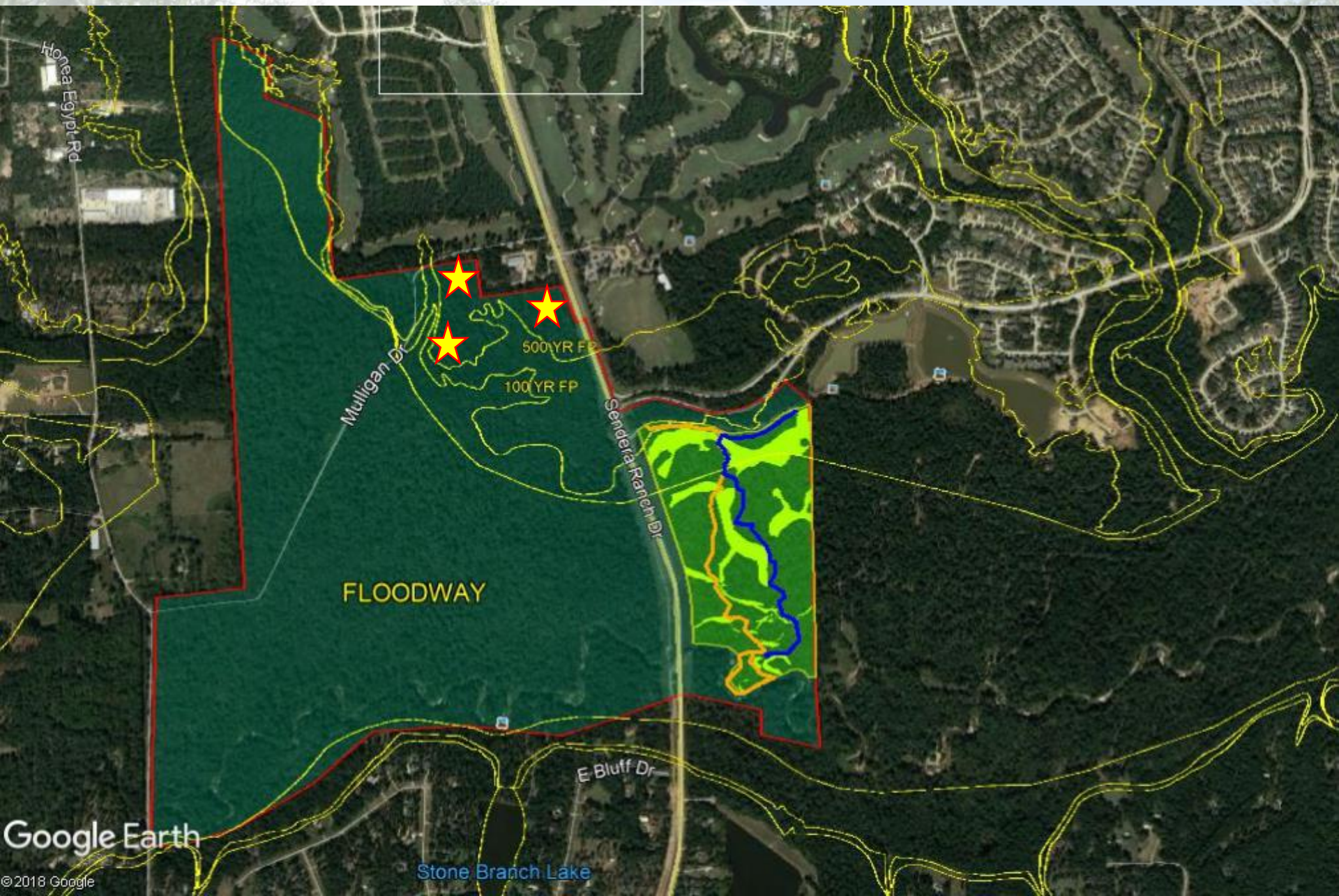
Magnolia

The Woodlands

Google Earth

© 2018 Google
Image Landsat / Copernicus

POSSIBLE NATURE/CONFERENCE CENTER LOCATIONS



CRITERIA FOR SUCCESS

- **Community Involvement**
 - Value the Resource
 - Volunteers
 - Financial Support
 - Marketing
- **Improved Standards**
 - Sand and Gravel Operations
 - Streamside buffers
 - Improved techniques for natural filtering of runoff
- **Tax Relief for Private Land Owners**