

# LAKE CREEK GREENWAY

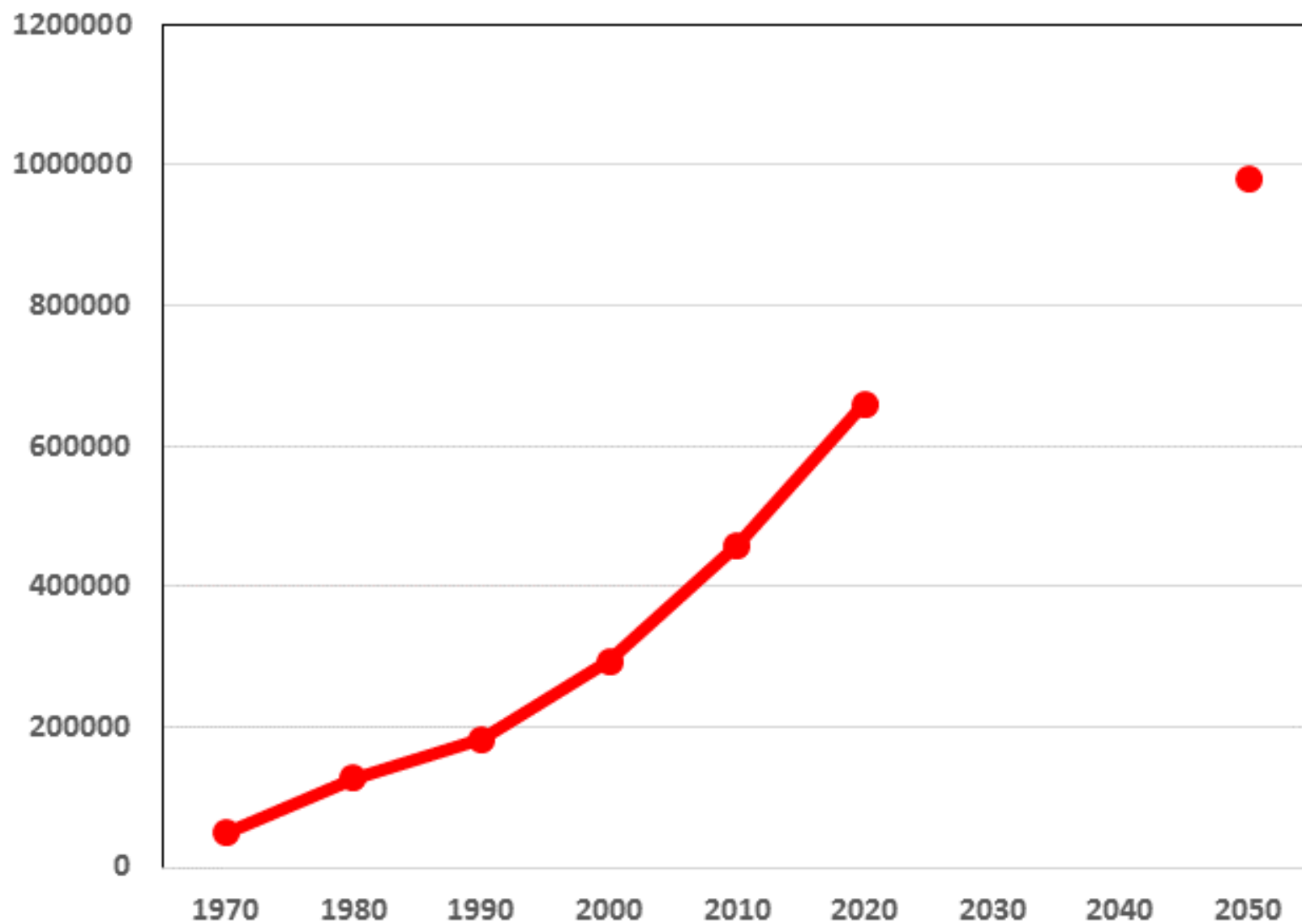




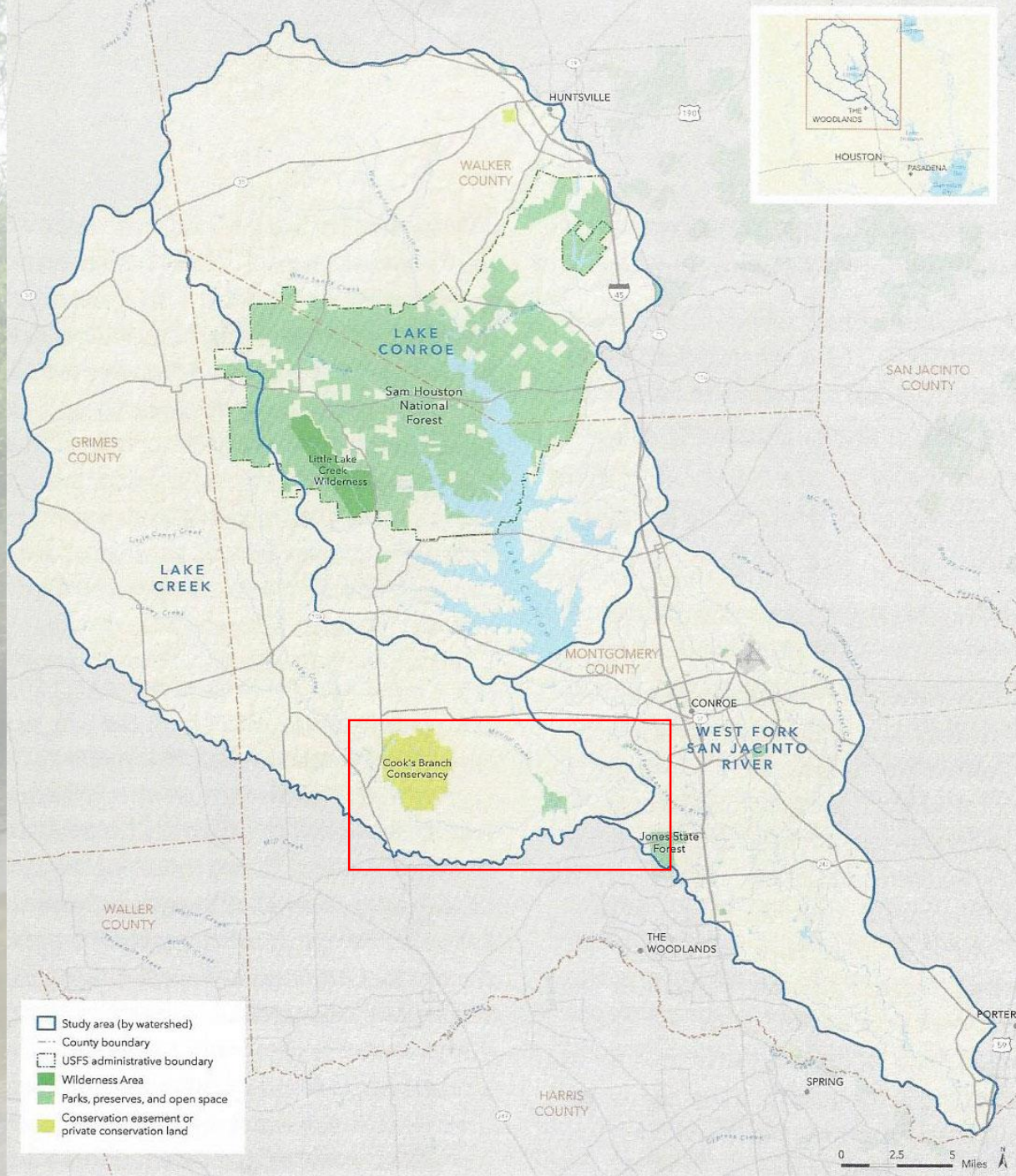
# WHY A GREENWAY

- **Effects of Rapid Development**
- **Access to Recreation and Nature**
  - Improved Health
  - Business Opportunities
  - Reduced Driving
- **Ecosystem Services**
  - Air and Water Quality
  - Reduce Flooding

# MONTGOMERY COUNTY POPULATION





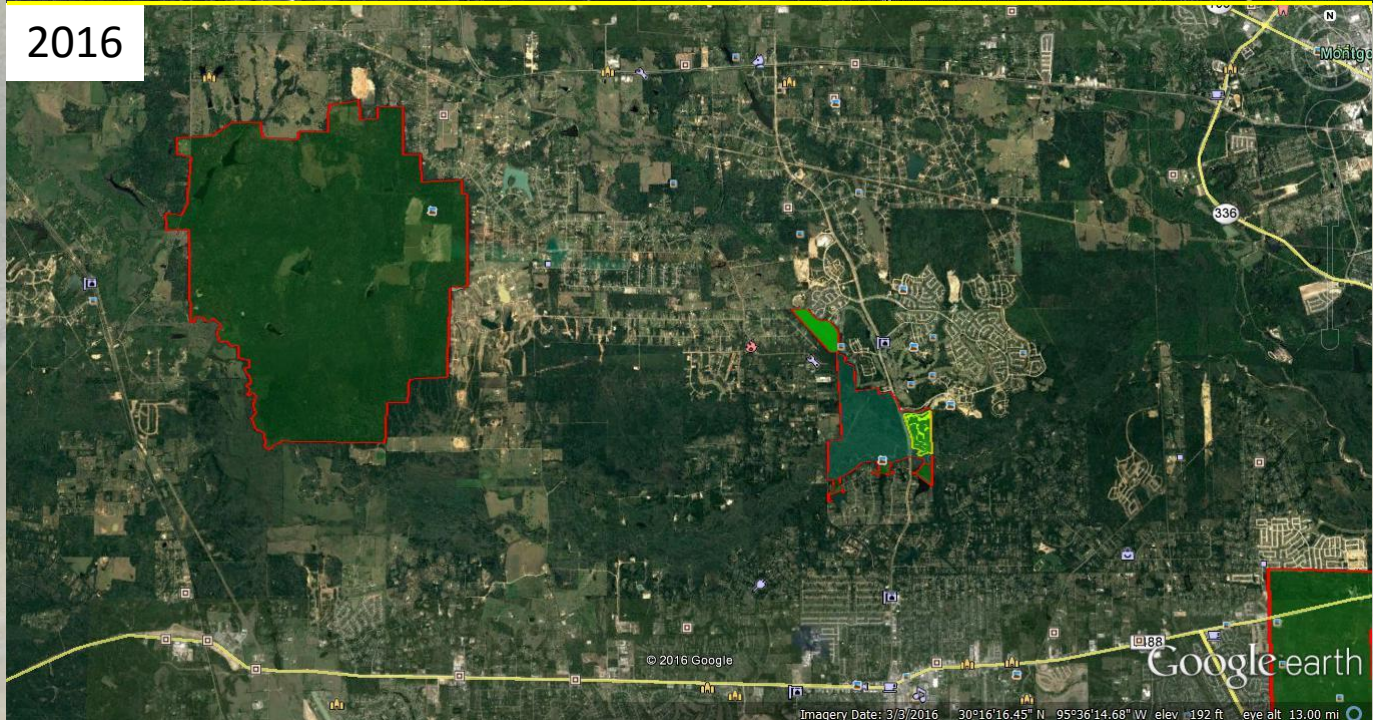




1996

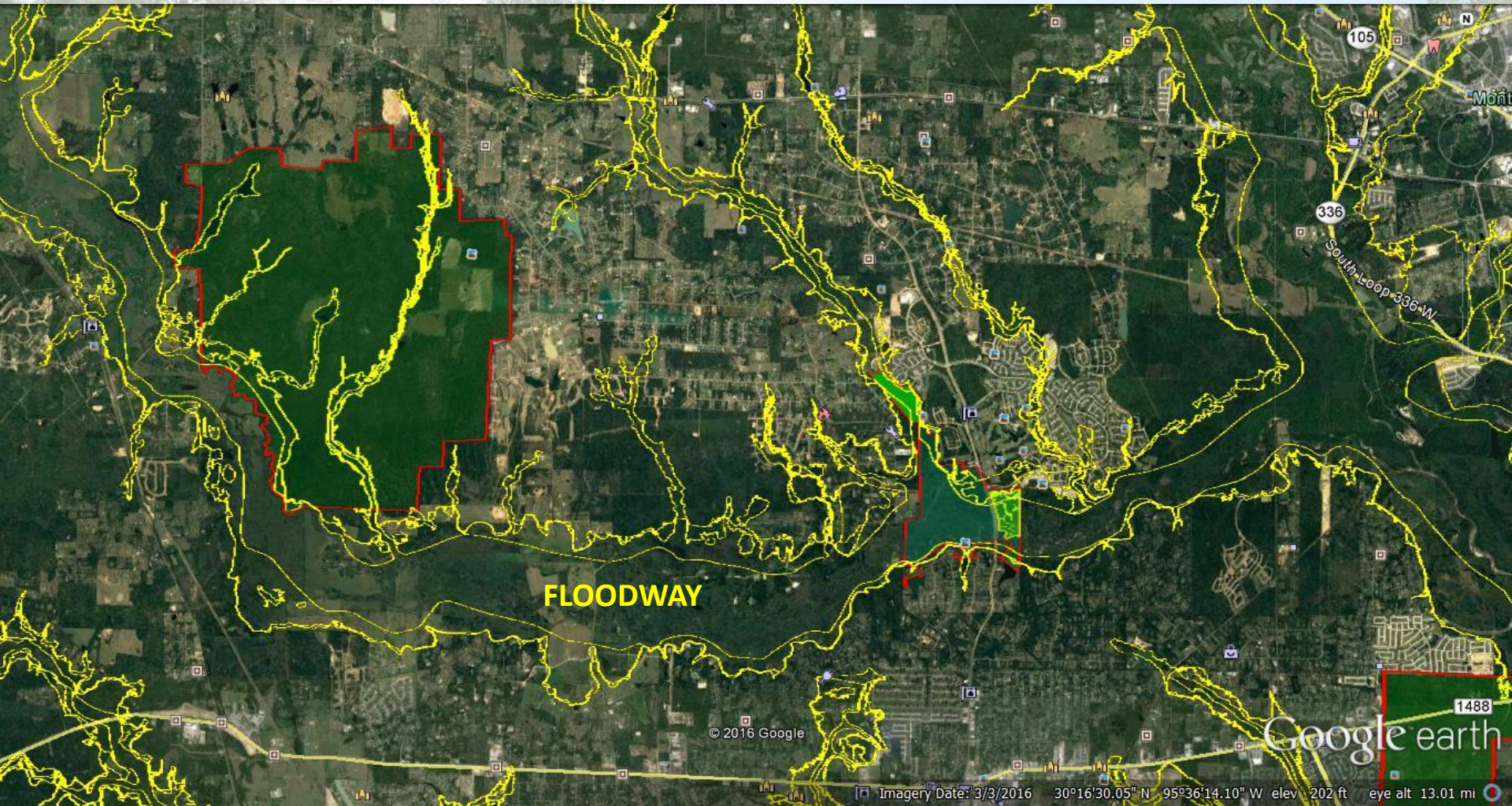


2016





# LOWER LAKE CREEK FLOOD PLAINS





# Partnership Activities

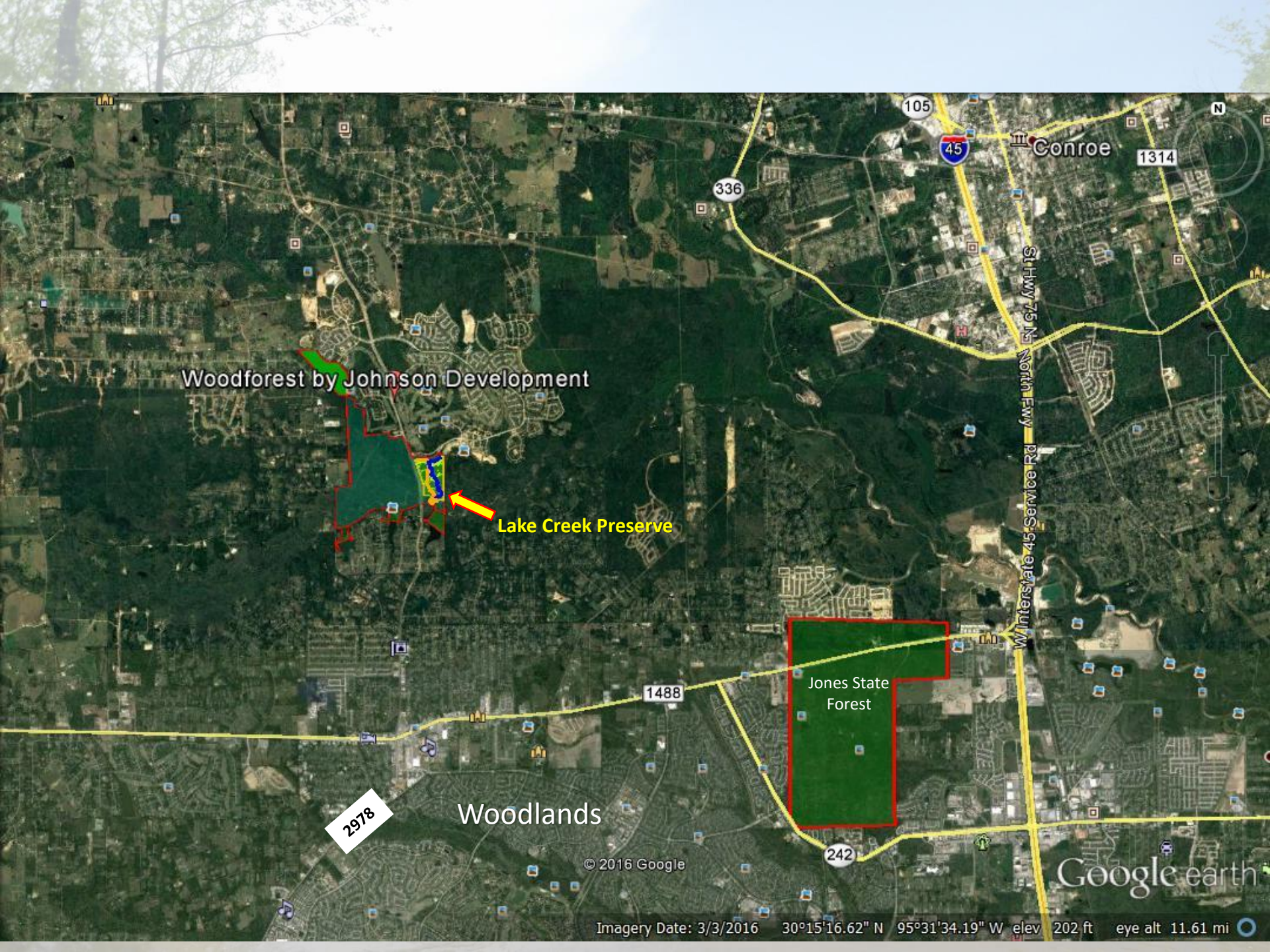
- **Near/Mid Term**

- Formed Lake Creek Greenway Partnership
  - Recruit Volunteers/Members
- Community Education Programs
- Develop Outdoor Program Opportunities
  - Lake Creek Preserve
  - Paddle Trail
  - Activities for Youth
- Identify Landowner/Business Partners

- **Long Term**

- Nature/Conference Center





Woodforest by Johnson Development

Lake Creek Preserve

Jones State  
Forest

Woodlands

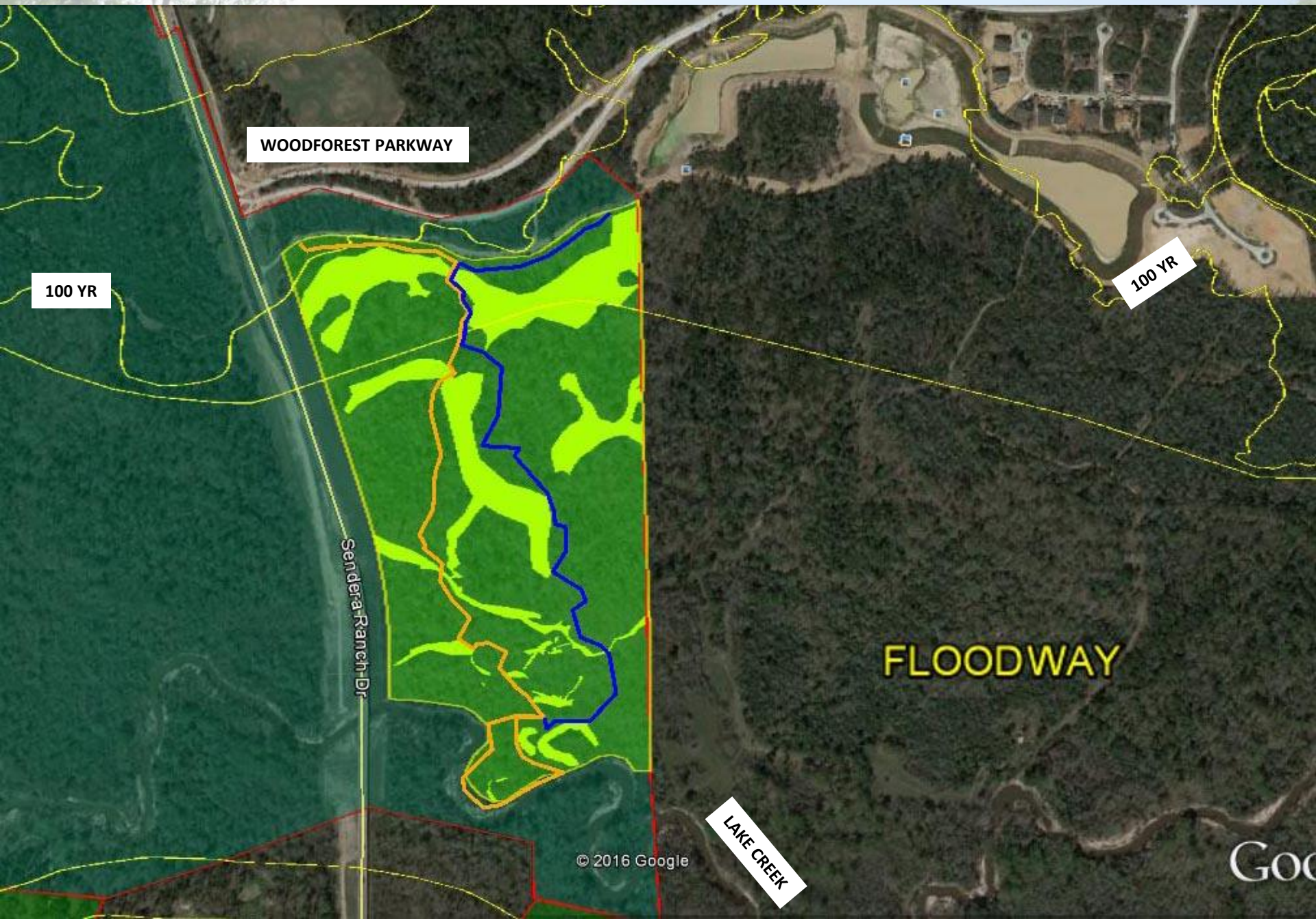
© 2016 Google

Google earth

Imagery Date: 3/3/2016 30°15'16.62" N 95°31'34.19" W elev 202 ft eye alt 11.61 mi



# MONTGOMERY COUNTY LAKE CREEK PRESERVE







KIOSK AT TRAILHEAD





**OVER 500' OF BOARDWALK**





**BOTTOMLAND FORESTS**





**WILDLIFE OBERSVATION PLATFORMS**





VIEW FROM PLATFORM





**DENSE PALMETTO GROVES**





**EPHEMERAL PONDS**



# EDUCATIONAL

## EPHEMERAL PONDS

Wetland ponds are distributed throughout these bottomland hardwood forests. Many, such as this one, are ephemeral (temporary) with water level depending on local rainfall or flooding. These water bodies provide a valuable service by holding water during flood events and part of the dry season, thus providing both flood mitigation and habitat, and a water supply for local plants and wildlife. Temporarily retaining runoff also gives the vegetation time to act as a water filter by locking up some of the heavy metals and organic pollutants.

Because these ponds are dry seasonally they are often devoid of fish, but temporarily provide a habitat and breeding location for amphibians, reptiles and some waterfowl. Some examples of local inhabitants of these ponds include: Wood Ducks, Blue Heron, Great Egret, Spring Peeper, Strecker's Chorus Frog, Red Eared Slider, and the occasional American Alligator and many other reptiles and amphibians.

Wetland ponds are a vital part of a diverse ecosystem, but are decreasing rapidly due to the clearing of bottomland forests and draining of the related wetlands.

Sign Sponsored by: Montgomery County Soil & Water  
Conservation District

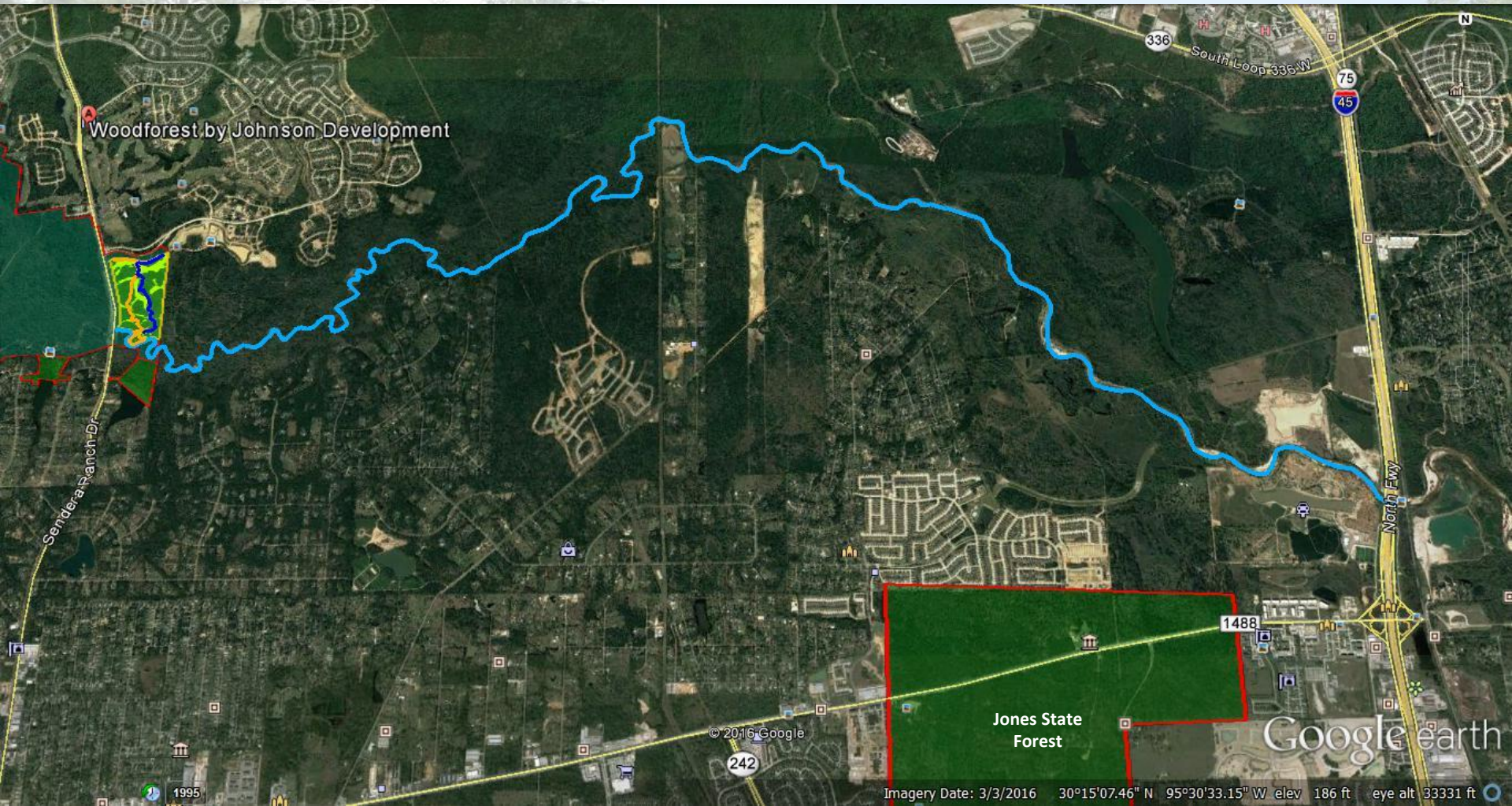






# LAKE CREEK PADDLETRAIL

## Fish Creek Thoroughfare to I45















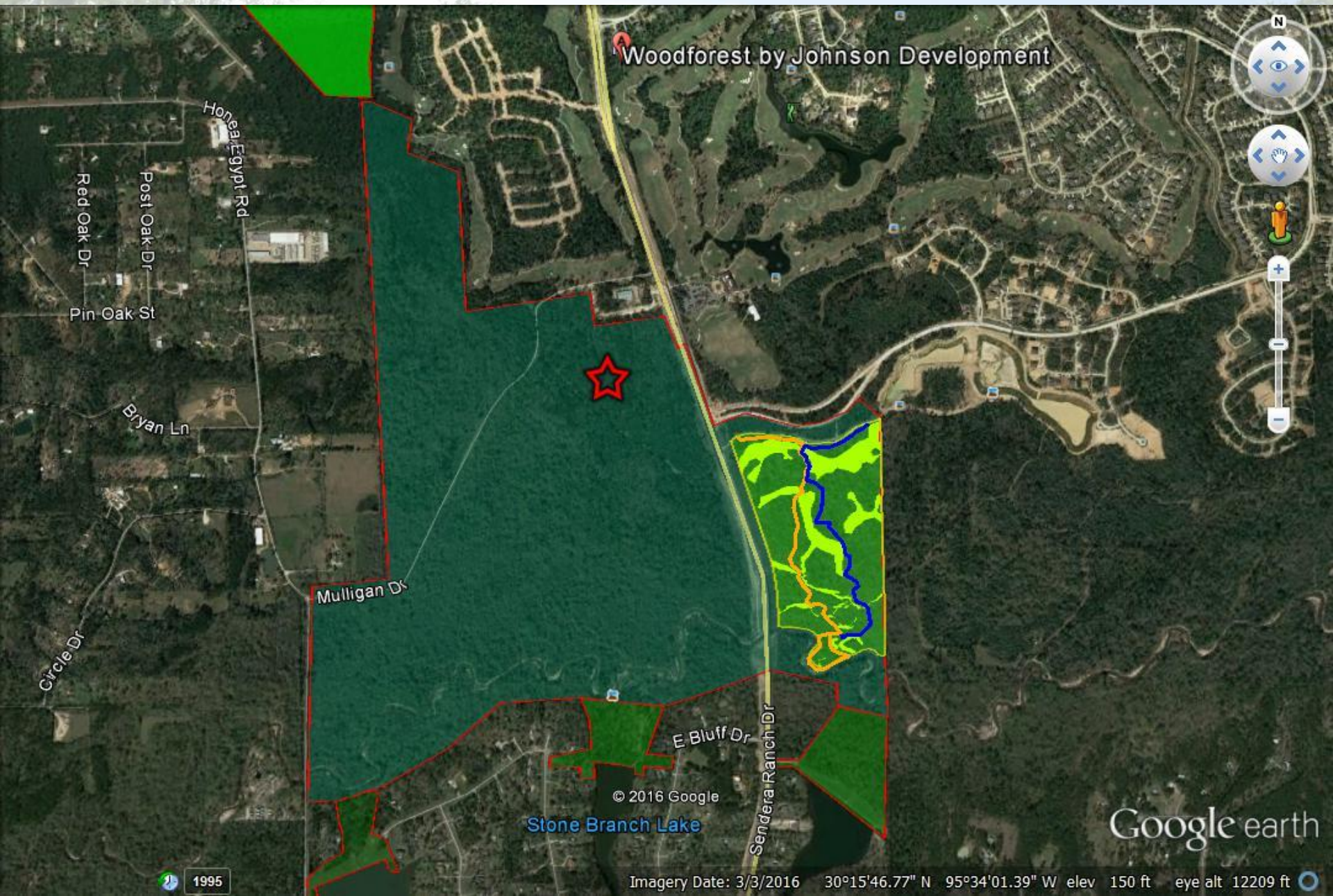


# Proposed Lake Creek Nature/Conference Center





# POSSIBLE NATURE CENTER LOCATION





## **WHY A NATURE/CONFERENCE CENTER**

- **Outdoor/hands on learning often more effective than classroom.**
- **Improve resident understanding of local resource issues.**
- **Magnet to encourage outdoor activities.**
- **Expose conference attendees to value of bottomlands**
- **Exposure to nature is healthy**

## **WHY AT THIS LOCATION**

- **Centrally located to Magnolia, Montgomery, Conroe**
- **Over 150,000 residents within 10 miles**
- **Proximity to 13+ schools in three school districts**
- **Within/adjacent to approximately 600 acres of preserves**
- **Enhances area as tourist destination**



# **ACCOMPLISHMENTS AS OF AUGUST 2017**

- **1 ½ mile educational nature trail with kiosk, 500 ' of boardwalks, nature guides and signage and first nature observation deck.**
- **Preliminary surveys of paddle trail between Fish Creek Thoroughfare Bridge and I45.**
- **Access to plans for Spring Creek Nature/Community Center and preliminary investigation of design changes and funding sources.**



# **CRITERIA FOR SUCCESS**

- **Community Involvement**
  - **Value the Resource**
  - **Volunteers**
  - **Financial Support**
  - **County Government Support**
- **Improved Standards**
  - **Sand and Gravel Operations**
  - **Streamside buffers**
  - **Improved techniques for natural filtering of runoff**
- **Tax Relief for Key Land Owners**